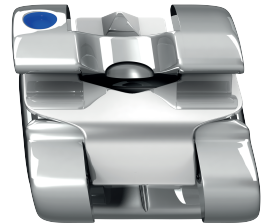




---

# The Multi FA appliance – the next step in CL II / CL III correction (Advanced) & The Advantages of Bi-dimensional Active SL System & Bio- Active/ Bio- Active Light Archwires

8th of May 2025  
Hotel Sophia, Tartu, Estonia



## Course agenda & topics:

09.00- 10.00	Welcome, morning coffee with snacks & socializing
10.00 - 12.00	<p>Introduction to the Multi Fa Appliance – The Next Step in CL II / CL III Correction</p> <ul style="list-style-type: none"><li>• Overview of the existing concepts for CL II / CL III malocclusion</li><li>• The understanding of the new approaches for CL II / CL III malocclusion</li><li>• Appliance description and its functions</li><li>• CL II correction &amp; CL III correction</li><li>• The multi - segmental approach</li><li>• Space opening / regaining &amp; Space closing</li><li>• Combination with Aligner Treatment</li><li>• Case presentation and discussion</li></ul>
12.00 - 12.30	Coffee break
12:30 - 14:30	<p>The Multi FA Appliance Advanced Topics</p> <ul style="list-style-type: none"><li>• Multi FA activations and tooth movement control</li><li>• Inner spring mounting</li><li>• Outer spring mounting and activation</li><li>• Anchorage</li><li>• Aligners &amp; Multi- FA Segmental Approach</li><li>• "Round table" - discussion</li><li>• Share your experience with other doctors, clinical tips, cases...</li></ul>

14.30 - 15.30 Lunch

15.30 - 17.30 **The Advantages of Bi-dimensional Active SL System & Bio- Active/ Bio- Active Light Archwires**

- The SL System which combines the advantages of bi-dimensional active SL
- system, accuracy, highly sophisticated wire and Biological (TMJ, periodontal) considerations.
- Why are active SLB are superior?
- The clinical advantages of the combination of high - performance wires with the bi-dimensional bracket system
- Let's not forget about the TMJ & the periodontal tissue...

18.30 - ..... Social program



**Dr. Yoav Mazor (Israel, Tel Aviv University 1990)**

- Lecturer & clinical instructor at the Prosthetic department at the Tel Aviv University.
- Specialist in Orthodontics and Dento-facial Orthopedics.
- Master in Orthodontics. Lecturer and clinical instructor at the Orthodontic department, Jerusalem university (Lingual, Orthodontic TAD, Self ligating systems)
- Owner & manager of the PRM 3D's company.
- Professional advisor to manufacturers of Orthodontic products. "Shiba" hospital - management of special needs cases: mentally disabled, Ortho-surgery, Cranio-facial disorders & syndromes.
- Professional advisor and supervisor at a national health institute- Dental health Lecturer in Orthodontics.

**Course fee:**

**Doctors:** 390€ early bird (till the 31st of December 2024), late bird - 450€

**Residents:** 150€

Includes:

- *Certificate with hours*
- *Coffee and lunch breaks*
- *Dinner*
- *\* VAT will not be added*

**More information and Registration:**

Annabell Bubnis  
annabell.bubnis@medeq.ee  
+372 5693 5646

